

# Chicago Pneumatic Construction Tools



**Chipping Hammers, Pick Hammers,  
Rivet Busters, Vibration Reduced Hammers**

**Built to last**



CP 0012 handle based on the famous CP 0009 design



Screw cap retainer



Spring type retainer



Quick change retainer



CP 4125 special heat treated cylinders with chrome plated bores for extra durability



CP 4130 four bolt flange for increased durability, strength and ease of service

# Chipping Hammers

## Key features

With 2", 3" and 4" cylinder options, Chicago Pneumatic offers a very complete range of chipping hammers for all types of construction and industrial applications.

Introducing CP 0012, a new 12 lb. hammer for light chipping, and additional features on the classics – CP 4123 and CP 4125 hammers – for extra toughness and reliability.



CP 0012

### CP 0012

- Optimum power-to-weight ratio for a good balance between hitting power and easy handling
- Straight forward design for easy maintenance and repair
- Handle design similar to the famous CP 0009
- Teasing throttle and an air cushioned piston to give the operator precise control
- Muffler assembly as standard
- Rugged construction, hardened steel cylinder and handle
- Choice of bushing:
  - .680" Round, chisel rotates freely
  - .580" Hex, prevents chisel rotation
- 19x50 Hex



CP 4123

### CP 4123 and CP 4125

- Heat treated cylinder
- Spline locking to prevent loosening of handle or cylinder
- Powerful, yet compact and light-weight
- Rugged construction, hardened steel cylinder and handle
- Teasing throttle for precise control
- Pistol grip handle with self closing outside trigger
- Available in 2", 3" or 4" cylinder stroke versions
- Choice of bushing:
  - .680" Round, chisel rotates freely
  - .580" Hex, prevents chisel rotation
- Classic simplate valve (4123)
- Unique ring valve as standard for harder blow in tough applications or dirty environments (4125)
- Chrome plated cylinder for extra durability (4125)



CP 4125

### CP 0016, 4130, 4131

- Four bolt, high strength back-head
- "D" handle with outside trigger and extra safety mechanism
- Simplate valve for smooth operation
- Strong and reliable
- Slim and light screw-on retainer for Hex 19x50 mmmoil points and chisels (CP 0016)
- Choice of bushing (4130, 4131):
  - .680" Round, chisel rotates freely
  - .580" Hex, prevents chisel rotation
- Available in 3" or 4" cylinder stroke versions (4130)
- Quick change retainer (4131) (For round collar chisels only)



CP 0016



CP 4130



CP 4131



# For all jobs in construction and industrial applications



## CP 0012 – Light Chippers

The CP 12 is the lightest chipper in the CP range of pneumatic hammers. Since the CP12 is light and has a high blow frequency, it is very easy to handle and control for more precise jobs. Typical applications include alteration work, hole making and trimming.

## CP 4123, CP 4125 – Medium Chippers

The most popular CP chipping hammer of all times, the CP 4123, is used for a wide variety of construction and industrial applications, from light to medium chipping to heavy cutting. Choose the cylinder size that best suits your particular application.

The extra features of the CP 4125 make it more suitable for tough construction and industrial applications, rugged use in foundries, shipyards, refineries or fabrication shops. In a dirty or warm air environment, the CP 4125 will still hit hard in a consistent way, be reliable and last longer than conventional hammers.

## CP 0016, CP 4130, CP 4131

### – 4-bolt Chippers

The CP 16 is the European version of the CP 4130, which is used predominately in the US market in the 8 kg category. The 4-bolt hammers are designed to tackle punishing jobs with the hard hitting power that you expect from CP. It is used for medium-duty to heavy-duty chipping, cutting and trimming operations. The four bolt handle provides better durability and makes the tool easy to disassemble for maintenance. CP 4131 is equipped with a quick change retainer for easy swap of tools.

Part no	Model	Retainer type	Weight kg (lb)	Cylinder stroke mm (in)	Length mm (in)	Blows per minute BPM	Air consumption l/s (cfm)	Muffler included as standard	Chuck size mm (in)
8900 0001 01	CP 0012 19x50	Screw cap	5.5 (12)	46 (1.75)	410 (16)	2600	9.5 (20)	yes	H 19x50 (3/4x2)
8900 0001 02	CP 0012 2R	Spring type	5.5 (12)	46 (2)	410 (16)	2600	9.5 (20)	yes	R 17.3 (.680)
8900 0001 03	CP 0012 2H	Spring type	5.5 (12)	46 (2)	410 (16)	2600	9.5 (20)	yes	H 14.7 (.580)
8900 0001 04	CP 4123 2R	Spring type	6 (13)	51 (2)	327 (12.9)	2400	11.5 (25)	–	R 17.3 (.680)
8900 0001 05	CP 4123 2H	Spring type	6 (13)	51 (2)	327 (12.9)	2400	11.5 (25)	–	H 14.7 (.580)
8900 0001 06	CP 4123 3R	Spring type	6.5 (14 1/4)	76 (3)	378 (14.9)	1920	12 (26)	–	R 17.3 (.680)
8900 0001 07	CP 4123 3H	Spring type	6.5 (14 1/4)	76 (3)	378 (14.9)	1920	12 (26)	–	H 14.7 (.580)
8900 0001 08	CP 4123 4R	Spring type	7 (15 1/2)	102 (4)	410 (15.5)	1500	12.5 (27)	–	R 17.3 (.680)
8900 0001 09	CP 4123 4H	Spring type	7 (15 1/2)	102 (4)	410 (15.5)	1500	12.5 (27)	–	H 14.7 (.580)
8900 0001 10	CP 4125 2R	Spring type	6 (13)	51 (2)	337 (13.25)	2400	12 (26)	–	R 17.3 (.680)
8900 0001 11	CP 4125 2H	Spring type	6 (13)	51 (2)	337 (13.25)	2400	12 (26)	–	H 14.7 (.580)
8900 0001 12	CP 4125 3R	Spring type	6.5 (14 1/4)	76 (3)	362 (14.25)	1920	12.5 (27)	–	R 17.3 (.680)
8900 0001 13	CP 4125 3H	Spring type	6.5 (14 1/4)	76 (3)	362 (14.25)	1920	12.5 (27)	–	H 14.7 (.580)
8900 0001 14	CP 4125 4R	Spring type	7 (15 1/2)	102 (4)	394 (15.25)	1500	13 (28)	–	R 17.3 (.680)
8900 0001 15	CP 4125 4H	Spring type	7 (15 1/2)	102 (4)	394 (15.25)	1500	13 (28)	–	H 14.7 (.580)
8900 0001 16	CP4130 3R	Spring type	8.5 (15 1/2)	76 (3)	420 (16.5)	1920	12 (26)	yes	R 17.3 (.680)
8900 0001 17	CP4130 3H	Spring type	8.5 (15 1/2)	76 (3)	420 (16.5)	1920	12 (26)	yes	H 14.7 (.580)
8900 0001 18	CP4130 4R	Spring type	9 (19 1/2)	102 (4)	450 (17.75)	1500	12.5 (27)	yes	R 17.3 (.680)
8900 0001 19	CP4130 4H	Spring type	9 (19 1/2)	102 (4)	450 (17.75)	1500	12.5 (27)	yes	H 14.7 (.580)
8900 0001 32	CP 0016 19x50	Screw cap	8.5 (15 1/2)	76 (3)	420 (16.5)	1920	12 (26)	yes	H 19x50 (3/4x2)
8900 0001 33	CP4131 3R	Quick change	8.5 (15 1/2)	76 (3)	??? (???)	1920	12 (26)	yes	R 17.3 (.680)
8900 0001 34	CP4131 3H	Quick change	8.5 (15 1/2)	76 (3)	??? (???)	1920	12 (26)	yes	H 14.7 (.580)

• All CP hammers are supplied with oval collar retainer as standard (more retainer options available on last page) • <sup>3</sup>/<sub>8</sub>" air inlet

# Pickhammers and clay diggers

## Key features

CP demolition picks are powerful yet relatively light making them suitable for a wide variety of light to medium demolition applications.

They are particularly popular with rental outlets because of their rugged and straightforward design and their versatility of use.



**CP 0111** rugged 4 bolt backhead locking mechanism



**CP 0222 CHIT** handle



**CP 0222 CHOT** handle



**CP 0222** retainer latch



**FL 0022/FL 0025** handle



CP 0111



CP 0222



FL 0022



FL 0025

### CP 0111

- Heat treated alloy steel components for durability
- Robust locking mechanism and main body
- Precise throttle action
- Ring valve design
- "D" handle with outside trigger
- Latch retainer

### CP 0222

- High power to weight ratio
- Slim and compact design for easy handling
- High work rates
- Heat treated alloy steel components for durability
- "D" handle with inside trigger or outside trigger
- Latch retainer

### FL 0022

- Very powerful blow at relatively low frequency (1300 bpm)
- Special features for mining applications inc. machined barrel, exhaust port at top of barrel and high quality valve for regular blow and less blockage in dirty air environment
- Slim design with machined barrel and screw-on retainer to work in tight spaces

### FL 0025

- Same robust design and construction as the FL 22, but with a longer cylinder stroke, special valve and heavier piston for more power
- Low frequency blow (1100 bpm)
- Nose cone retainer and bushing for good control of 1" (25 mm) round demolition steels (moil points and narrow chisels only)
- Hardened steel components and machined barrel for all-round robustness

# For all tough jobs in the construction and mining industry

## CP 0222 – Demolition Pick

The CP222 is CP's best seller for rental outlets worldwide. It is light and slim but gives you a lot of power to do a wide range of applications such as demolition, heavy-duty chipping and cutting operations.

## FL 0022

- Demolition pick with Hex 22 mm (7/8") chuck: With a long stroke and powerful hit, the FL22 is particularly suitable for working with relatively hard concrete for demolition work, pile-capping or bridge deck work.
- Clay digging with Square 19 mm (3/4") variant: The FL22 clay digger is the No. 1 hammer for soft tunneling, mining and underpinning applications in the UK. It is the ideal tool for any operation that involves the digging of soil and soft ground. The exhaust port is at the top of the barrel so it can be buried almost to the handle. The FL22 is also used without silencer for tunneling and underground mining, making it a very slim and easy tool to handle.
- Mining or tunnelling applications: When breaking hard rock in tunnels or mines, the FL22 delivers one of the most powerful blows in its weight class. With its machined barrel, hardened steel construction and high quality components, the FL22 is a very robust air tool, specially made to endure tough working environments, such as mines.



## FL 0025 – Tunnelling Pick

The FL25, also known as the "CP Jigger" in the UK, has been developed specifically for tunnelling and heavy demolition work. It has a very powerful blow, which combined with its low blow rate makes it ideal for hard concrete demolition, pile capping or rock breaking.

Part no.	Model	Weight kg (lb)	Length mm (in)	Blows per minute (bpm)	Air consumption l/s (cfm)	Air inlet (in)	Retainer	Handle type	Chuck size mm (in)	Chuck orientation
8900 0001 20	CP 0111 CHLA	13 (29)	570 (22.5)	1800	21 (45)	3/8" NPTF	Latch	"D" handle – Outside trigger	H 25x108 (1x4 1/4)	Flat-to-flat
8900 0001 41	CP 0111 CHIT	13 (29)	570 (22.5)	1800	21 (45)	3/8" NPTF	Latch	"D" handle – Outside trigger	H 22x82,5 (7/8x 3 1/4 )	Flat-to-flat
8900 0001 21	CP 0222 CHIT	10 (22)	570 (22.5)	1700	19 (40)	1/2" NPTF	Latch	"D" handle – Inside trigger	H 22x82,5 (7/8x 3 1/4 )	Flat-to-flat
8900 0001 22	CP 0222 CHITBS	10,5 (24)	495 (19.5)	1700	19 (40)	3/4" BSP	Latch	"D" handle – Inside trigger	H 22x82,5 (7/8x 3 1/4 )	Point-to-flat
8900 0001 23	CP 0222 CHOTBS	10,5 (24)	495 (19.5)	1700	19 (40)	3/4" BSP	Latch	"D" handle – Outside trigger	H 22x82,5 (7/8x 3 1/4 )	Point-to-flat
8900 0001 24	FL 0022 clay digger	10 (22)	495 (19.5)	1300	21 (45)	3/4" BSP	Cap	"D" handle – Outside trigger	Sq 19x82 (3/4x3 1/4)	Point-to-flat
8900 0001 25	FL 0022 S clay digger	10,5 (24)	495 (19.5)	1300	21 (45)	3/4" BSP	Cap	"D" handle – Outside trigger	Sq 19x82 (3/4x3 1/4)	Point-to-flat
8900 0001 26	FL 0025 S	12 (27)	571 (22.5)	1100	25 (53)	3/4" BSP	Cap	"D" handle – Outside trigger	R 25x75 (1x3)	N/A
8900 0001 31	FL 0022 S	10,5 (24)	495 (19.5)	1300	21 (45)	3/4" BSP	Cap	"D" handle – Outside trigger	H 22x82,5 (7/8x 3 1/4 )	Point-to-flat



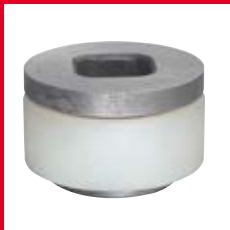
"D" handle



Pistol grip handle



Special Boyer valve



New polyurethane bumper (P072334) and lower sleeve (P072333)

# Rivet Busters

## Key features

Originally designed for cutting and forming metal rivets, the CP buster is now mostly used for concrete demolition and has become one of the stars of the CP range. It has a low frequency blow with hitting power equivalent

to a paving breaker of twice its weight. The new "V" series includes a stepped piston and step cylinder to prevent accidental ejection of the piston.



CP 4181 PULER



CP 4181 DULER

### CP 4181 PULER, DULER, PUSER and DUSER

- Teasing throttle for progressive hitting frequency gives better control of this powerful machine
- Special Boyer valve makes the cylinder stroke effectively longer for more hitting power
- Boyer valve's high quality design makes the blow more consistent
- Forged steel handle for long life in rugged conditions
- Stepped piston of hardened steel
- New buffer ring is now polyurethane for extra life
- Stepped piston to prevent accidental ejection of the piston
- Choice of cylinders:  
11" cylinder (720 bpm)  
8" cylinder (1080 bpm)
- Choice of handle:  
Pistol grip with outside trigger  
"D" handle with inside trigger

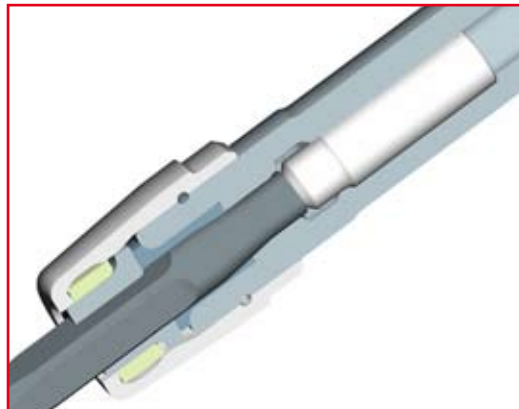


CP 4181 PUSER



CP 4181 DUSER

With each buster, it is recommended that you also purchase these additional consumable items: a polyurethane bumper (P072334), lower sleeve (P072333) and retainer spring (P073942).



With the stepped piston design and step cylinder, CP 4181 model "V" replaces the industry standard CP 4181 model "A" rivet buster.

# For both metal and concrete applications

There is no hammer with more hitting power per kg than a CP rivet buster – even a T-handle breaker will need to be at least twice as heavy to give an equivalent blow. This super-power can still be controlled thanks to low blow frequency and teasing throttle – that’s why the CP rivet buster is one of the favorite tools of demolition contractors in the US.

Users have discovered many new applications for rivet busters for working in both concrete and steel. No longer is the buster used exclusively by iron workers for forming and cutting rivets, but it has now found its way into the hands of operators who need the most powerful tool for the job.



Special Jumbo Shank steel accessories for rivet busters



Lower sleeve, Polyurethane bumper and standard retainer spring



## Concrete applications

- Bridge deck work, where weight of breakers is restricted
- De-capping foundation pillars, where concrete is very hard
- Medium to heavy concrete demolition
- As an alternative to paving breakers where high hitting power is required but applied in a restrained space or working horizontally

## Metal applications

- Cutting and removing large rivets and bolts with narrow chisels and backout punch, or other special steel and accessories
- Cutting metal tanks or plates with ripper chisel
- Industrial applications such as in foundries or the petrochemical industry

Part no.	Model	Weight kg (lb)	Blows per minute (bpm)	Cylinder stroke mm (in)	Length mm (in)	Air consumption l/s (cfm)	Air inlet (in)	Chuck size (Jumbo Shank)	Handle	Cylinder
8900 0001 27	CP 4181 PUSER	13,5 (30)	1080	8	580 (23)	18 (38)	3/8 NPTF	.890" x 1.125" Taper	Pistol grip-Outside trigger	Short cylinder
8900 0001 28	CP 4181 PULER	15 (33)	720	11	660 (26)	19 (40)	3/8 NPTF	.890" x 1.125" Taper	Pistol grip-Outside trigger	Long cylinder
8900 0001 29	CP 4181 DUSER	14 (31)	1080	8	580 (23)	18 (38)	3/8 NPTF	.890" x 1.125" Taper	"D" handle-Inside trigger	Short cylinder
8900 0001 30	CP 4181 DULER	15,5 (34)	720	11	660 (26)	19 (40)	3/8 NPTF	.890" x 1.125" Taper	"D" handle-Inside trigger	Long cylinder





New Vibration Reduction Assembly



Stronger components and lower vibration levels



CP17 SVR and FL22 SVR "quick-change" retainer



CP17 SVR and FL22 SVR "quick-change" retainer

# New range of vibration reduced hammers

## Key features

At Chicago Pneumatic, we have worked hard to develop a design that would reduce vibration but not the performance of the tool. We are now proud to launch a new range of three vibration-reduced hammers for chipping,

demolition and clay digging applications. These new tools include a brand new vibration isolator unit but keep the key features of the original CP tools: robustness and good handling, without sacrificing hitting power.



CP 0017 SVR



FL 0022 SVR



FL 0025 SVR

### CP 0017 SVR

- Brand new isolator assembly unit: more reliable, easily maintained and giving lower vibration levels
- Closed grip "D" handle for maximum effectiveness and operator comfort
- Hardened steel piston and cylinder for durability. Aluminum handle to reduce tool weight
- Classic simplate valve design provides smooth operation and reliability
- Air inlet with built-in screen filter, positioned to improve tool balance

### FL 0022 SVR

- Brand new isolator assembly unit: more reliable, easily maintained and giving lower vibration levels
- 4.7 m/s<sup>2</sup> vibration level (in accordance to ISO 8662-5)
- Relatively slow (1300 bpm) but powerful hit
- Low air consumption: 33 cfm (15 l/sec)
- Teasing throttle with outside trigger for optimum control
- Slim design for work in tight spaces
- Special features for mining applications inc. machined barrel, exhaust port at top of barrel and high quality valve for regular blow and reduced blockage in dirty air environment
- Choice of chucks: Hex 22 mm (7/8") or Square 19mm (3/4")

### FL 0025 SVR

- Brand new isolator assembly unit: more reliable, easily maintained and lower vibration levels
- Same robust design and construction as FL22 but longer cylinder stroke, special valve and heavier piston for more power
- Low frequency blow (1100 bpm)
- Nose cone retainer and bushing for good control of 1" (25 mm) round demolition steels (moil points or narrow chisels only)

Part no	Model	Chuck size (mm)	Weight kg (lb)	Length mm (in)	Blows per minute (bpm)	Air consumption l/s (cfm)	Vibration level (ISO 8662-5) (m/s <sup>2</sup> )	Air inlet (in)
8900 0001 38	FL 0022 SVR	H 22x82,5 (7/8x 3 1/4 )	12 (26)	625 (25)	1300	15 (32)	4.7	3/4" BSP
8900 0001 39	FL 0022 SVR	Sq 19x82 (3/4x3 1/4)	12 (26)	625 (25)	1300	15 (32)	4.7	3/4" BSP
T025402	FL 0022 VR	Sq 19x82 (3/4x3 1/4)	11,5 (25)	625 (25)	1300	15 (32)	4.7	3/4" BSP
T025403	FL 0022 SVR	R 25x75 (1x3)	12 (26)	625 (25)	1300	15 (32)	4.7	3/4" BSP
8900 0001 40	FL 0025 SVR	R 25x75 (1x3)	14 (31)	711 (28)	1100	20 (42)	7.6	3/4" BSP
8900 0001 35	CP 0017 SVR	H 19x50 (3/4x2)	8 (18)	514 (20)	1900	12 (25)	2.6	1/2" BSP
8900 0001 36	CP 0017 SVR	R 17.3 (.680)	8 (18)	514 (20)	1900	12 (25)	2.6	1/2" NPT
8900 0001 37	CP 0017 SVR	H 14.7 (.580)	8 (18)	514 (20)	1900	12 (25)	2.6	1/2" NPT



# Same power – less vibration

Since the power output of the CP vibration reduced tools has not been reduced, the same work can be done with the CP17 SVR, FL22 SVR and FL25 SVR as with the equivalent non-vibration reduced CP tools i.e. CP16, FL22S and FL25S.

Operators find the CP SVR tools more comfortable and easy to handle especially when working on very hard concrete, since the isolator assembly absorbs a lot of the back pressure, giving you better control of the tool.



## CP 0017 SVR Chipping Hammer

- In the construction industry, the CP17 SVR is ideal for chipping duties and light demolition jobs: repair and "refurb" work on concrete, stone and brickwork.
- In the industrial sector, the CP17 SVR is also suitable for maintenance and light demolition jobs in foundries, power plants, shipyards and refineries. On assembly lines in manufacturing shops, the CP17 SVR is very much appreciated since it reduces exposure to vibrations.

## FL 0022 SVR for demolition, clay digging and mining applications

- Demolition pick with Hex 22 mm (7/8") chuck: With a relatively slow but powerful hit, the FL22 is particularly suitable for working with relatively hard concrete for demolition work, pile-capping or bridge deck work.
- Clay digging with Square 19 mm (3/4") chuck: The FL22 SVR clay digger is a vibration-reduced version of the original FL22 clay digger which is the no 1 for soft tunneling, mining and underpinning applications in the UK. It retains most of the original features of the FL22 giving the same performance whilst lowering the vibration levels. It is the ideal tool for any operation that involves clay digging and the digging of soft ground.

- Mining or tunnelling applications: When breaking hard rock in tunnels or mines, the FL22 offers one of the most powerful hits in its weight class. With its machined barrel, hardened steel construction and high quality components, the FL22 is a very robust air tool, especially made to endure tough working environments, such as mines.

## FL 0025 SVR heavy demolition and tunnelling pick

The FL25 has been developed specifically for hard concrete demolition, pile-capping or rock breaking. The FL25 SVR has the same slow blow rate and very high-energy impact as the standard non-vibration-reduced version but offers significantly lower vibration levels. Its design is based on the the FL22, with the same handle, high quality components and strong construction but it has a longer barrel, heavier piston, a nose-cone retainer and is bushed to use stronger 1" (25 mm) round shank demolition steels.



Line oilers



Water separator



Muffler



Retainer springs



Economy-type retainer



Quick change retainer

# Accessories

Chicago Pneumatic accessories are available to make your hammer even more effective. Make steel replacement even quicker by using one of our quick change retainers. Extend the life of your hammer by removing moisture and

adding oil to the air, or reduce noise levels by adding a muffler assembly. Use the most effective steel for your application. For the complete assortment of steel accessories, see catalog 9800 0362 93.

## Chipping hammer accessories

for CP 0012, CP 4123, CP 4125 and CP 4130

Model	Part no.	Description
Retainers	P107243	Economy-type retainer, oval collar
	P114062	Quick change retainer, oval collar
	P092869	AT Lug-type retainer, oval collar
	P137735	Ball-type retainer, round collar
Retainer springs	P135246	Polyurethane
	P070994	Wire
	P139189	Heavy duty wire
Mufflers	P125052	CP 4123 and CP 4125 muffler assembly

## Clay digger accessories

for CP 0111 and CP 0222

Model	Part no.	Description
Mufflers	F814133	CP 0111 muffler assembly
	R141765	CP 0222 muffler assembly

## Air line accessories

Model	Part no.	Description
Lubricator 1300	8900 0050 02	European type claw couplings 1" BSP 1300ml
Lubricator 43	8900 0050 07	US type claw coupling 1" NPT 43oz
Water separator	8900 0050 00	3/4" BSP thread
	8900 0050 01	3/4" NPT thread
Airline oil	P137646	16 oz

## Consumables and accessories

for CP 4181 busters

Description	Part no.
Lower sleeve	P072333
Polyurethane bumper	P072334
Retainer spring (standard)	P073942
Retainer spring (polyurethane)	P135248
Upper sleeve	P156988

## Special steels for rivet busters

Due to its extreme hitting power, special steels must be used with rivet busters. All CP 4181 use Jumbo Shank accessories (see catalog 9800 0362 93).

Buster special tools *	Length, mm (in)	Part no.	
Moil Point	305 (12)	3083 4140 10	
Narrow chisel	305 (12)	3083 4141 10	
Cutting (loose rivets)	305 (12)	3083 4142 10	
Cut*ting (Tight rivets)	305 (12)	3083 4145 10	
Drift Pin Driver	190 (7 1/2)	3083 4143 00	
Ripper	230 (9)	3083 4144 00	
	Rivet size, mm (in)	Part no.	
Backout punch	12,5 (1/2)	250 (9 3/4)	3083 4147 00
	16 (5/8)	250 (9 3/4)	3083 4147 10
	20 (3/4)	240 (9 1/2)	3083 4147 20
	20 (3/4)	300 (12)	3083 4147 30
	22 (7/8)	240 (9 1/2)	3083 4147 40
	22 (7/8)	305 (12)	3083 4147 50
	25 (1)	240 (9 1/2)	3083 4147 60
25 (1)	305 (12)	3083 4147 70	

\* More choice of steel lengths in catalog 9800 0362 93.

## Chipping hammer steel

for CP 0012, CP 4123, CP 4125, CP 4130, CP 4131

Hex .580" shank

Round .680" shank

Description	Tip width/Blade size mm (in)	Length overall mm (in)	Oval collar Part no.	Round collar Part no.	Oval collar Part no.	Round collar Part no.
Moil point		230 (9)	3083 4120 00	3083 4130 00	3083 4100 00	3083 4110 00
		305 (12)	3083 4120 10	3083 4130 10	3083 4100 10	3083 4110 10
		450 (18)	3083 4120 20	3083 4130 20	3083 4100 20	3083 4110 20
		610 (24)	3083 4120 30	3083 4130 30	3083 4100 30	3083 4110 30
Narrow chisel	20 (3/4)	230 (9)	3083 4121 00	3083 4131 00	3083 4101 00	3083 4111 00
	20 (3/4)	305 (12)	3083 4121 10	3083 4131 10	3083 4101 10	3083 4111 10
	20 (3/4)	450 (18)	3083 4121 20	3083 4131 20	3083 4101 20	3083 4111 20
	20 (3/4)	610 (24)	3083 4121 30	3083 4131 30	3083 4101 30	3083 4111 30
Wide chisel	40 (1 1/2)	230 (9)	3083 4122 00	3083 4132 00	3083 4102 00	3083 4112 00
	40 (1 1/2)	305 (12)	3083 4122 10	3083 4132 10	3083 4102 10	3083 4112 10
	40 (1 1/2)	450 (18)	3083 4122 20	3083 4132 20	3083 4102 20	3083 4112 20
	50 (2)	230 (9)	3083 4122 30	3083 4132 30	3083 4102 30	3083 4112 30
Wide chisel	50 (2)	305 (12)	3083 4122 40	3083 4132 40	3083 4102 40	3083 4112 40
	50 (2)	450 (18)	3083 4122 50	3083 4132 50	3083 4102 50	3083 4112 50
	63,5 (2 1/2)	230 (9)	3083 4122 60	3083 4132 60	3083 4102 60	3083 4112 60
	63,5 (2 1/2)	305 (12)	3083 4122 70	3083 4132 70	3083 4102 70	3083 4112 70
Wide chisel	63,5 (2 1/2)	450 (18)	3083 4122 80	3083 4132 80	3083 4102 80	3083 4112 80
	75 (3)	230 (9)	3083 4122 90	3083 4132 90	3083 4102 90	3083 4112 90
Bushing tool	2 sq	240 (9.5)	3083 4124 00	3083 4134 00	3083 4104 00	3083 4114 00

Other lengths of steel accessories are available upon request. See catalog 9800 0362 93 for ordering numbers.

Hex 19x50mm (3/4" x 2") for CP 0012, CP 0016, CP 0017 SVR

Description	Tip width mm (in)	Length mm (in)	Weight kg (lp)	Part Number
Moil Point		240 (9.5)	0,8 (1.8)	3083 3220 00
		440 (17)	1,3 (2.9)	3083 3221 00
Narrow Chisel	22 (7/8)	240 (9.5)	0,8 (1.8)	3083 3222 00
	22 (7/8)	44 (17)	1,3 (2.9)	3083 3223 00
Wide Chisel	60 (2.25)	190 (7.5)	0,9 (2)	3083 3224 00
Shaft For Bush Ham.		170 (6.75)	0,9 (2)	3083 3225 00
Bushing tool	40x40 (1.5x1.5)	9 teeth	0,5 (1.1)	3083 3226 00
	40x40 (1.5x1.5)	16 teeth	0,5 (1.1)	3083 3227 00

## Pick hammer and Clay digger steel

### Point to flat

Hex 22x82,5 (7/8" x 3 1/4") for CP 0222, FL 0022, FL 0022 SVR

Description	Tip width mm (in)	Length mm (in)	Weight kg (lp)	Point to flat Part no.
Moil Point		380 (15)	1,5 (3.3)	3083 3242 00
		1000 (39)	4,5 (10)	3083 3243 00
Narrow Chisel	25 (1)	380 (15)	1,5 (3.3)	3083 3244 00
	25 (1)	1000 (39)	4,5 (10)	3083 3245 00
Wide Chisel	75 (3)	380 (15)	2,5 (5.5)	3083 3246 00
Asphalt Cutter	125 (5)	380 (15)	3,2 (7)	3083 3069 00
Digging Chisel	75 (3)	380 (15)	3,4 (7.5)	3083 3247 00
Digging Spade	120 (4.75)	380 (15)	3,2 (7)	3083 3248 00
Clay Spade	125 (5)	430 (17)	3,3 (7.3)	3083 3249 00
Wedge Chisel	35 (1.25)	380 (15)	3,5 (7.7)	3083 3250 00
Shaft For Pad		310 (12)	1,3 (3)	3083 3251 00
Tamping Pad, Round	175 Dia		7,5 (16.5)	3083 3252 10
Tamping Pad, Square	175sq		6 (13.2)	3083 3239 00
Driver Pad, Round	100 (4)		2,5 (5.5)	9245 2817 90

### Square

19x82.5 mm (3/4" x 3 1/4") for FL 0022, FL 0022 SVR

Description	Tip width mm (in)	Length mm (in)	Weight kg (lp)	Part no.
Moil Point		330 (13)	1,4 (3)	3083 4170 00
Narrow Chisel		330 (13)	1,4 (3)	3083 4170 10
Clay Spade	100x165 (4x6.5)	350 (5.25)	2,4 (5.25)	3083 4170 20
	125x205 (5x8)	400 (6.75)	3,1 (6.75)	3083 4170 30

### Round

25x75mm (1" x 3") for FL 0025, FL 0025 SVR

Description	Tip width mm (in)	Length mm (in)	Weight kg (lp)	Part no.
Moil Point		330 (13)	1,6 (3.5)	3083 3265 00
Narrow Chisel	25 (1)	330 (13)	1,6 (3.5)	3083 3266 00

### Flat to flat

for CP 0111 and CP 0222 Hex 7/8" x 3 1/4" shank – CP 0222

Hex 1" x 4 1/4" shank – CP 0111

Description	Tip width/Blade size mm (in)	Length overall mm (in)	Flat to Flat Part no.	Tip width/Blade size mm (in)	Length overall mm (in)	Flat to Flat Part no.
Moil point		350 (14)	3083 4050 00		380 (15)	3083 4030 00
		450 (18)	3083 4050 10		450 (18)	3083 4030 10
		610 (24)	3083 4050 20		610 (24)	3083 4030 20
Narrow chisel	25 (1)	350 (14)	3083 3303 00	28 (1 1/8)	380 (15)	3083 3309 00
	25 (1)	450 (18)	3083 4051 10	28 (1 1/8)	450 (18)	3083 4031 10
	25 (1)	610 (24)	3083 3304 00	28 (1 1/8)	610 (24)	3083 4031 20
Wide chisel	75 (3)	350 (14)	3083 3305 00	75x50 (3 x 2)	380 (15)	3083 3310 00
	75 (3)	450 (18)	3083 4052 10	75x50 (3 x 2)	450 (18)	3083 4032 10
	75 (3)	610 (24)	3083 4052 20	75x50 (3 x 2)	610 (24)	3083 4032 20
Bushing tool	50x50 (2x2)	350 (14)	3083 4056 00	2 sq	230 (9)	3083 4036 00



Moil point



Narrow chisel



Wide chisel



Wide chisel



Bushing tool



---

### **Over 100 years of experience**

Chicago Pneumatic Tool Company has been designing, manufacturing and selling pneumatic tools since 1901. Today we offer a wide range of products including pneumatic and hydraulic breakers, clay diggers, picks and busters, scabblers, rock drills, rotary and chipping hammers, sump and sludge pumps, and a whole lot more. Having started up in the city that shares our name, Chicago Pneumatic is now a global company, with sales organizations around the world.

For more detailed information, please contact:

